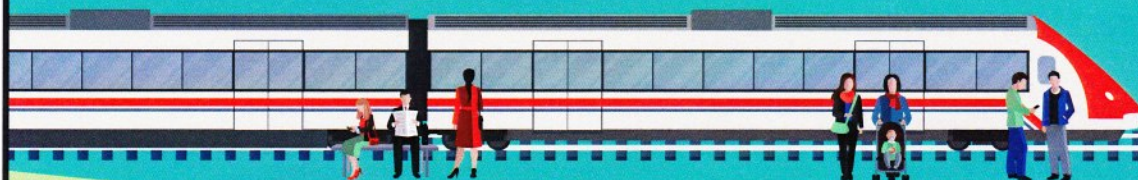




IS FINDING SOLUTIONS





Even undercapitalized, Amtrak is enhancing energy efficiency with improved operating practices and higher load factors. Proper funding would allow Amtrak to modernize its fleet with new energy efficient technologies, while further boosting its energy advantage.



AMTRAK DIESEL AND ELECTRIC TRAINS—

- 39.5% **MORE ENERGY EFFICIENT** per passenger-mile than light trucks
- 32.6% **MORE EFFICIENT** than automobiles
- 12% **MORE EFFICIENT** than commercial aviation

AMTRAK HELPS MITIGATE DIRECT AND INDIRECT AIR POLLUTION BY:

-  Running electric locomotives on the Northeast Corridor and fuel-efficient diesels elsewhere
-  Removing tens of millions of passengers a year from highways and airports
-  Encouraging denser development around many of its stations
-  Adding to the appeal and cost-effectiveness of rail travel by serving passengers, making connections and sharing facilities

INNOVATIVE EQUIPMENT HELPS AMTRAK FIND SOLUTIONS FOR ENERGY EFFICIENCY—

Amtrak's new Cities Sprinter locomotives feature regenerative braking – a dynamic brake system that has the ability to feed up to 100% of energy generated during braking back to the power grid.

In 2014 Amtrak introduced new GenSet switchers in Washington, D.C. These include a special engine to reduce diesel fuel consumption by about 50%, while producing lower levels of pollutant emissions.



About The National Association of Railroad Passengers | The National Association of Railroad Passengers (NARP) is the only national organization speaking for the nearly 40 million users of passenger trains and rail transit. We have worked since 1967 to expand the quality and quantity of passenger rail in the U.S. Our mission is to work towards a modern, customer-focused national passenger train network that provides a travel choice Americans want. Our work is supported by more than 28,000 individual members nationwide. Learn more at www.narprail.org.

PASSENGER TRAINS: AN ENERGY AND CLIMATE SOLUTION

Modern passenger rail can carry large numbers of people longer and faster, at more efficient levels than ever before. Through the use of fuel efficient diesel engines, as well as electrically-run trains in the Northeast Corridor, passenger rail helps mitigate air pollution as compared to automobiles or aircraft. With proper funding, rail networks with energy efficient technologies can be developed to help cut fuel consumption from the transportation sector, guard against future oil price shocks, avoid costly military operations and bolster national security.

TRANSIT RAIL—

- **23.5% MORE ENERGY EFFICIENT** per passenger-mile than cars
- **31.4% MORE ENERGY EFFICIENT** than light trucks



**IT TAKES 16 LANES OF HIGHWAY
TO CARRY AS MANY PEOPLE PER HOUR
AS JUST 1 TWO-TRACK RAILROAD.**



Transportation accounts for about
30% of US greenhouse gas emissions.



300 miles of railroad uses less land
than a single commercial airport.

RAILROADS REDUCE AMOUNT OF PAVED SURFACE
required for transportation. Serious degradation of aquatic
ecosystems occurs when more than 10% of a watershed is paved.



**3 BILLION GALLONS OF FUEL
WERE WASTED IN TRAFFIC
CONGESTION LAST YEAR—**
enough to fill the New Orleans
Superdome four times over.



Each year individuals can
AVOID DRIVING 4,400 MILES
by taking public transportation.

